



WISCONSIN DEPARTMENT OF
PUBLIC INSTRUCTION

[Website](#) | [Parents & Students](#) | [Schools & Educators](#) | [Libraries](#) | [Data & Media](#)



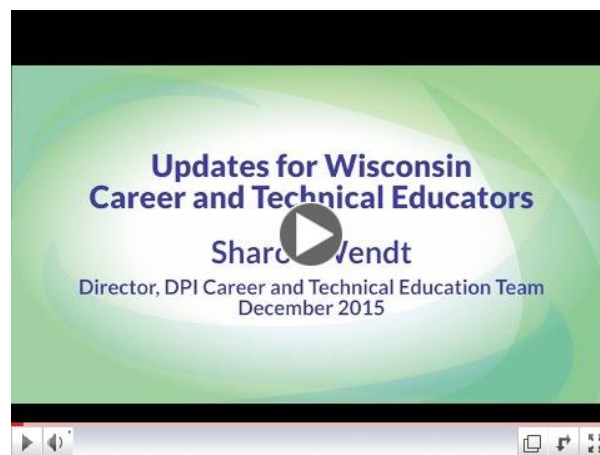
Notes from the Director

Sharon Wendt
Team Director
Career & Technical Education

Happy Holidays!

This is our Winter edition of the CTE newsletter. There are lots of updates and other information included. Our team hopes you have a happy holiday season with warm wishes for a wonderful New Year!

Throughout the upcoming year, especially during CTE Month in February, the CTE team would like to spotlight your college and career success stories through our social media platforms. Please click [here](#) for the submission form--we look forward to showcasing your CTE programs in the future!



December 2015 CTE Winter Updates

[Click here to see "What's New" on our CTE Website](#)

Assistant Director, CTE

[Sara Baird](#) (608) 266-9609



Out of Office

Sara will be out on extended maternity leave with the birth of her child on Friday, August 28th. During Sara's absence, Sharon Wendt, CTE Director, and Christine Smith, Operations Program Associate, are assisting with her duties. Sara anticipates her return in early 2016.

Website Migration

The Department of Public Instruction is migrating website domains. Please bear with us while we undergo this significant task. The URL of our main CTE web page has changed from cte.dpi.wi.gov to dpi.wi.gov/cte. *CTE related web pages will also be migrated in a similar fashion.* Redirects of all DPI web pages occurs for 90 days following each migration.

Carl Perkins Grants

[Roselynn Bittorf](#) (608) 266-3922



Application for 2016-17

The 2016-17 Carl Perkins application was posted on our website in November. Applications are due February 1, 2016.

The 2016-17 planning numbers are available. [Read more...](#)

CTEERS

[Don Vedder](#) (608) 267-2279



2015 Concentrator Completer Files

If you have not already done so, check your email to download 2015 Concentrator Completer Graduate Follow-up files which were sent out on November 19th. You have 30 days to [read more...](#)

CTE PROGRAM AREAS

Business & Information Technology

[Dave Thomas](#) (608) 266-2348



Microsoft IT Academies in Wisconsin

Over 150 locations have joined the [Microsoft IT Academy program](#) and will offer [Microsoft Office Specialist](#) certification testing opportunities over the 2015-2016 and 2016-2017 school years. Through this program, schools will offer high school students in Wisconsin communities [read more...](#)

Wisconsin Educator of Business & Information Technology

Our professional organization for the [Wisconsin Educators of Business & Information Technology](#) has released the following dates for future conventions on October 6-7, 2016 in the Wisconsin Dells and October 12-13, 2017 in Stevens Point.

FBLA

Chapter registration for the Wisconsin's Regional Leadership Conference and State Leadership Conference may be accessed through the Wisconsin FBLA Conference Website. The high school Regional Leadership Conferences are [read more...](#)

Marketing Management & Entrepreneurship

[Tim Fandek](#) (608) 267-9253



Young Entrepreneur of the Year -

Applications Due January 31, 2016

EY, Junior Achievement and the Wisconsin Department of Public Instruction would like to give recognition to an individual from 5th grade through 12th grade that is making their mark on our free enterprise system by turning a business idea into a reality; [read more...](#)

DECA

Being community oriented is one of DECA's guiding principles. Over the past few months, DECA chapters have collected over 50,000 items during the "Trick-or-Can" statewide initiative; raised over \$15,000 for the Muscular Dystrophy Association; conducted random acts of kindness; and much more!

Here is a video from Green Bay Southwest DECA illustrating the EPIC impact of conducting Random Acts of Kindness (RAOK). [Read more...](#)



Green Bay Southwest DECA- EPIC
Community Service Video

[**Click link to see more Wisconsin DECA resources and pictures**](#)

Technology & Engineering [Brent Kindred](#) (608) 266-2683



TEE/WTEA Fall In-services are Complete

The DPI/WTEA Fall In-services are complete. Thank you to everyone who was able to attend and participate. These events are always a great opportunity to share and learn. For access to the professional resources [read more...](#)

SkillsUSA Events

Our six SkillsUSA District competitions took place the first two weeks of December, with outstanding attendance at each location. Next on the list are Regional events that happen at the end of January and through February. For information, please visit the following link. <http://www.skillsusa-wi.org/wordpress/>

Mark Your Calendars for the WTEA Conference

The WTEA Spring Conference takes place February 25-26, 2016 in Wisconsin Dells. For the agenda and registration information, please visit the following link. <http://wtea-wis.org/>

Agriculture & Natural Resources

[Jeff Hicken](mailto:jeff.hicken@dpi.wisconsin.gov) (608) 267-9255



2015 DPI Fall Agriculture, Food, and Natural Resources/FFA Inservices Complete

Nearly 250 agriculture instructors and guests attended this year's DPI Fall Inservices. Materials from these inservices can be found [here](#).

2015 National FFA Convention and Expo

Wisconsin Association of FFA members once again shined at this year's National FFA Convention and Expo in Louisville, KY. Highlights from the convention can be viewed [here](#).

Health Science

[Janice Atkinson](mailto:janice.atkinson@dpi.wisconsin.gov) (608) 266-2347



HOSA - WI HOPE Conference Set

Wisconsin Health Science Occupations Professional Educators (WI HOPE) will host their annual conference on Friday, February 26, 2016 at Wisconsin Dells High School. Topics will address [read more ...](#)

HOSA Fall Leadership Conferences Enhance Health Science Programs

Wisconsin HOSA-Future Health Professionals members and advisors attended a Fall Leadership Conference in Oconomowoc on November 9 or in Stevens Point on November 10 to hear from health care professionals, learn about community service opportunities, get involved with HOSA initiatives, and connect with others from across Wisconsin. HOSA enhances [read more...](#)

Family & Consumer Science [Diane Ryberg \(608\) 267-9088](#)



Professional Development Opportunities

Professional Staff Development Training for Family and Consumer Sciences Teachers is available through the CESA offices again this year. Please visit the CTE Calendar for professional development workshops being offered near you. Topics include: [read more...](#)

FCCLA

Three FCCLA Wisconsin Leadership Academy conferences were held on Oct. 13 at UW-Stout, Oct. 16 at American Family, Madison and October 19 at UW-Stevens Point. The Empower or MePower was the theme with over 800 members and advisers [read more...](#)

Career & Technical Student Organizations (CTSO)

CTSO Collaborative Teen Driving Safety Project

The Collaborative TEEN DRIVING SAFETY Grants were recently awarded to the following schools: [read more...](#)



CTSO Promotional Video

CTSOs are a vital part of a quality CTE program. Check out the video from Wisconsin CTSOs which highlights skills and knowledge that student officers and

members have gained by being involved with a CTSO in their school and district.



Explore Your Future
Through Wisconsin CTSOs

College & Career Readiness

Dual Enrollment

[Kevin Miller](#) (608) 267-3161



Course Options/Youth Options

As noted in the August CTE newsletter, the Course Options statute has gone through a few changes. The primary change that resulted from the 2015-17 state budget bill allows institutions of higher education to charge students additional tuition and fees for [read more...](#)

Career Pathways

[Robin Kroyer-Kubicek](#) (608) 266-2022



Academic and Career Planning (ACP)

As part of DPI's "Wisconsin Graduates are College AND Career Ready" campaign, we are all working hard within the agency and across partnerships to assist school districts to understand and leverage systems already in place rather than create whole new roles. This is especially true for the ACP project [read more...](#)

CTE Incentive Grant Funding

Formerly known as Act 59, the CTE Technical Incentive Grant program continues in partnership with DWD. \$3 million in funds are allocated to support school programming that results in students earning industry-recognized technical certifications that mitigate workforce shortages [read more...](#)

Google+ Communities

WISELearn, our state's educator portal, has created discipline-specific communities designed to support Wisconsin's educators. These social networks consist of professional learning communities where educators can connect, communicate, and collaborate.

Please encourage your CTE teachers to join this new platform for professional development.

Join our WISELearn CTE Communities at:

- [WI DPI Agriculture Education / FFA / WAAE](#)
- [WI DPI Business & IT Education / FBLA / WEBIT](#)
- [WI DPI Family & Consumer Science Ed / FCCLA / WFCE](#)
- [WI DPI Health Science Education / HOSA / HOPE](#)
- [WI DPI Marketing Education / DECA / WMEA](#)
- [WI DPI Technology & Engineering / SkillsUSA / WTEA](#)

Once your request is confirmed, you can access and enjoy your educator community. Within the community you can share your questions and answers with peers while connecting over the triumphs and challenges of teaching. We hope to see you there!

VISIT OUR WEBSITE



SUBSCRIBE TO LIST

FORWARD EMAIL

Copyright © 2015. All Rights Reserved.

[Forward this email](#)



This email was sent to christine.smith@dpi.wi.gov by timothy.fandek@dpi.wi.gov |

[Update Profile/Email Address](#) | Rapid removal with [SafeUnsubscribe™](#) | [About our service provider.](#)



WI Dept of Public Instruction | 125 S Webster St | PO Box 7841 | Madison | WI | 53707-7841